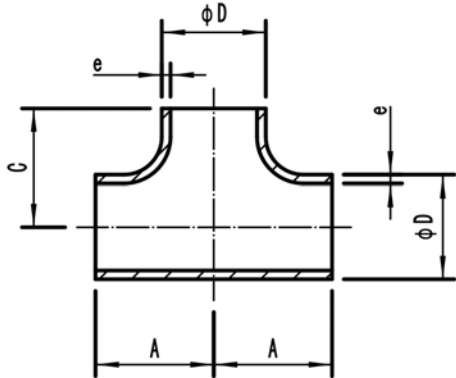


Equal Tees

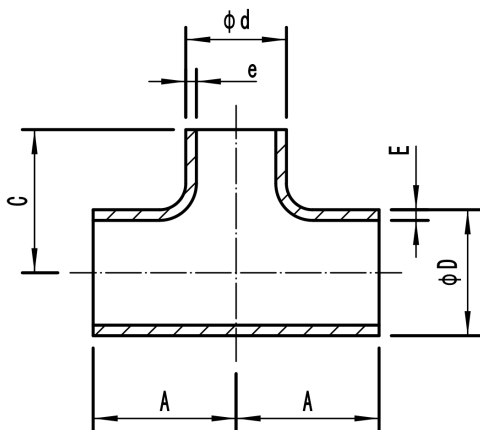
Material: CuNi 90/10
CuNi 70/30



Outside diameter of pipe		ANSI B16.9	
ØD		Centre to face	
nominal	actual	A	C
inch	mm	mm	mm
0.5	21.3	25	25
0.75	26.7	29	29
1	33.4	38	38
1.25	42.2	48	48
1.5	48.3	57	57
2	60.3	64	64
2.5	73	76	76
3	88.9	86	86
3.5	101.6	95	95
4	114.3	105	105
5	141.3	124	124
6	168.3	143	143
8	219.1	178	178
10	273	216	216
12	323.8	254	254
14	355.6	279	279
16	406.4	305	305
18	457	343	343
20	508	381	381

Reducing Tees

Material: CuNi 90/10
CuNi 70/30



Outside diameter of pipe						ANSI B16.9	
ØD x ød		ØD x ød		Centre to face		A	C
nominal		actual		A	C		
inch		mm		mm	mm	mm	mm
0.5	x	0.375	21.3	x	17.3	25	25
0.5	x	0.25	21.3	x	13.7	25	25
0.75	x	0.5	26.7	x	21.3	29	29
0.75	x	0.375	26.7	x	17.3	29	29
1	x	0.75	33.4	x	26.7	38	38
1	x	0.5	33.4	x	21.3	38	38
1.25	x	1	42.2	x	33.4	48	48
1.25	x	0.75	42.2	x	26.7	48	48
1.25	x	0.5	42.2	x	21.3	48	48
1.5	x	1.25	48.3	x	42.2	57	57
1.5	x	1	48.3	x	33.4	57	57
1.5	x	0.75	48.3	x	26.7	57	57
1.5	x	0.5	48.3	x	21.3	57	57
2	x	1.5	60.3	x	48.3	64	60
2	x	1.25	60.3	x	42.2	64	57
2	x	1	60.3	x	33.4	64	51
2	x	0.75	60.3	x	26.7	64	44

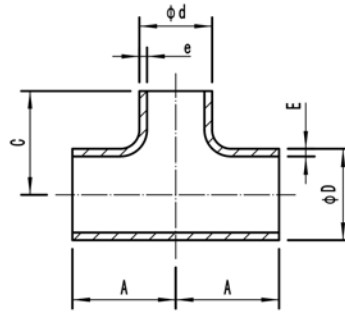


Shanghai Shihang Copper Nickel Pipe Fittings Co., Ltd.

TEL:86-21-58050989 FAX:86-21-68291168 E-mail:sales@shshihang.com Website:www.shshihang.com

Reducing Tees

Material: CuNi 90/10
CuNi 70/30



Outside diameter of pipe						ANSI B16.9	
ØD x Ød			ØD x Ød			Centre to face	
nominal			actual			A	C
inch			mm			mm	mm
2.5	x	2	73	x	60.3	76	70
2.5	x	1.5	73	x	48.3	76	67
2.5	x	1.25	73	x	42.2	76	64
2.5	x	1	73	x	33.4	76	57
3	x	2.5	88.9	x	73	86	83
3	x	2	88.9	x	60.3	86	76
3	x	1.5	88.9	x	48.3	86	73
3	x	1.25	88.9	x	42.2	86	70
3.5	x	3	101.6	x	88.9	95	92
3.5	x	2.5	101.6	x	73	95	89
3.5	x	2	101.6	x	60.3	95	83
3.5	x	1.5	101.6	x	48.3	95	79
4	x	3.5	114.3	x	101.6	105	102
4	x	3	114.3	x	88.9	105	98
4	x	2.5	114.3	x	73	105	95
4	x	2	114.3	x	60.3	105	89
4	x	1.5	114.3	x	48.3	105	86
5	x	4	141.3	x	114.3	124	117
5	x	3.5	141.3	x	101.6	124	114
5	x	3	141.3	x	88.9	124	111
5	x	2.5	141.3	x	73	124	108
5	x	2	141.3	x	60.3	124	105
6	x	5	168.3	x	141.3	143	137
6	x	4	168.3	x	114.3	143	130
6	x	3.5	168.3	x	101.6	143	127
6	x	3	168.3	x	88.9	143	124
6	x	2.5	168.3	x	73	143	121
8	x	6	219.1	x	168.3	178	168
8	x	5	219.1	x	141.3	178	162
8	x	4	219.1	x	114.3	178	156
8	x	3.5	219.1	x	101.6	178	152
10	x	8	273	x	219.1	216	203
10	x	6	273	x	168.3	216	194
10	x	5	273	x	141.3	216	191
10	x	4	273	x	114.3	216	184
12	x	10	323.8	x	273	254	241
12	x	8	323.8	x	219.1	254	229
12	x	6	323.8	x	168.3	254	219
12	x	5	323.8	x	141.3	254	216
14	x	12	355.6	x	323.8	279	270
14	x	10	355.6	x	273	279	257
14	x	8	355.6	x	219.1	279	248
14	x	6	355.6	x	168.3	279	238

Pipe Fittings



Shanghai Shihang Copper Nickel Pipe Fittings Co., Ltd.