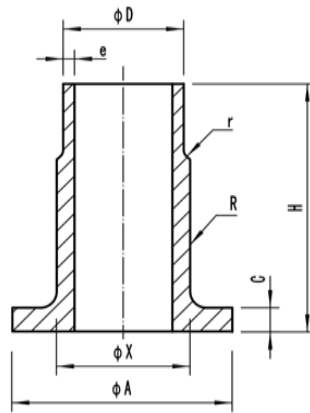


Composite Weld Neck Flanges-Long Inner Flange

16Bar

20Bar

Material: CuNi 90/10
CuNi 70/30



Outside diameter of pipe		EEMUA 145													
		16Bar							20Bar						
ØD		Wall thickness	ØA	H	C	ØX	R	Theo. weight	Wall thickness	ØA	H	C	ØX	R	Theo. weight
nominal	actual	e	mm	mm	mm	mm	mm	Kg/piece	e	mm	mm	mm	mm	mm	Kg/piece
inch	mm	mm							mm						
0.5	16	2	40	51	4	18	2	0.09	2	40	51	4	18	2	0.09
0.75	25	2	50	51	5	27	3	0.19	2	50	51	5	27	3	0.19
1	30	2.5	60	51	5	32	4	0.23	2.5	60	51	5	32	4	0.23
1.25	38	2.5	70	51	5	40	4	0.29	2.5	70	51	5	40	4	0.29
1.5	44.5	2.5	80	51	6	46.5	4	0.44	2.5	80	51	6	46.5	4	0.44
2	57	2.5	99	64	6	59	5	0.61	2.5	99	64	6	59	5	0.61
2.5	76.1	2.5	120	64	6	78	5	0.8	2.5	120	64	6	78	5	0.8
3	88.9	2.5	130	64	7	91	5	0.97	2.5	130	64	7	91	5	0.97
4	108	3	158	76	7	110	5	1.5	3	158	76	7	110	5	1.5
6	159	3	212	89	9	161.5	5	2.9	3.5	212	89	9	161.5	5	2.9
8	219.1	4	270	102	9	222	5	5.1	4.5	270	102	9	222	5	5.2
10	267	4.5	320	127	9	270	5	8.9	5.5	320	127	9	270	5	9.8
12	323.9	5.5	370	152	11	327	7	13.8	7	370	152	11	327	7	15.4
14	368	6.5	430	152	11	371	7	16.6	8	430	152	11	371	7	19
16	419.1	7	482	152	12	422	7	20.25	9	482	152	12	422	7	23.95
18	457.2	8	530	152	12	460	7	23.6	9.5	530	152	12	460	7	26.4
20	508	8.5	585	152	12	511	7	28.65	11	585	152	12	511	7	33.85
24	610	10.5	685	152	14	613	9	39.25	13	685	152	14	613	9	45.5
28	711	12	800	190	19	719	9	75.3	15	800	190	19	719	9	86.2
32	813	13.5	905	190	20.5	827	9	94.6	17	905	190	20.5	821	9	100.15
36	914	15.5	1000	190	22	922	9	115.55	19	1000	190	22	922	9	131.95

Flanges



Shanghai Shihang Copper Nickel Pipe Fittings Co., Ltd.