

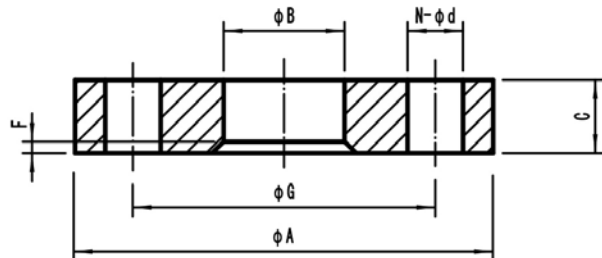
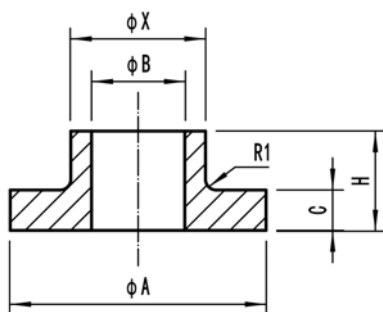
# Composite Slip On Flanges

10Bar

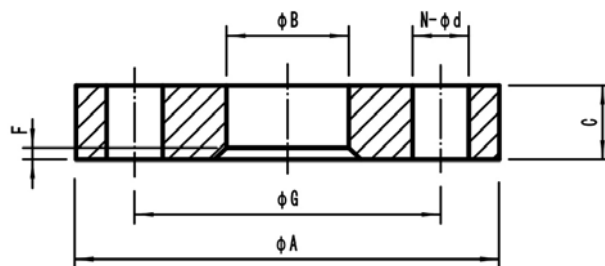
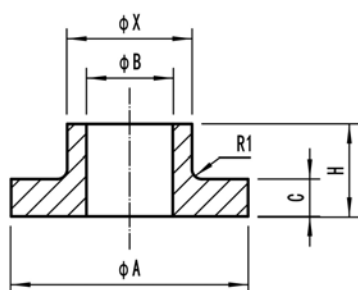
16Bar

20Bar

Material: CuNi 90/10  
CuNi 70/30



Outside diameter of pipe		DIN 86036							PN 10							
		10Bar							10Bar							
		Inner Flange							Outer Flange							
ØD		ØA	H	C	ØX	ØB	R1	Theo. weight	ØA	C	ØB	F	Drilling			Theo. weight
nominal	actual												ØG	N	Ød	
inch	mm	mm	mm	mm	mm	mm	mm	Kg/piece	mm	mm	mm	mm	mm	bolt holes	mm	Kg/piece
0.5	20	45	22	6	31	20.2	2	0.13	95	14	32	2	65	4	14	0.65
0.75	25	58	22	6	37	25.2	2	0.19	105	14	38	2	75	4	14	0.75
1	30	68	24	6	44	30.2	2	0.28	115	16	45	2	85	4	14	1.01
1.25	38	78	24	6	54	38.25	2	0.37	140	16	55	2	100	4	18	1.5
1.5	44.5	88	24	6	60	44.75	2	0.43	150	16	62	2	110	4	18	1.71
2	57	102	24	6	73	57.3	2	0.54	165	16	75	2	125	4	18	2
2.5	76.1	122	24	6	90	76.3	2	0.65	185	16	92	2	145	4	18	2.41
3	88.9	138	26	6	106	89.4	2	0.89	200	18	108	2	160	4	18	3
4	108	158	26	6	126	108.4	2	1.1	220	18	128	2	180	8	18	3.26



Outside diameter of pipe		EEMUA 145							EEMUA 145-Class 150 Lbs							
		16Bar&20Bar							Outer Flange							
		Inner Flange							Outer Flange							
ØD		ØA	H	C	ØX	ØB	R1	Theo. weight	ØA	C	ØB	F	Drilling			Theo. weight
nominal	actual												ØG	N	Ød	
inch	mm	mm	mm	mm	mm	mm	mm	Kg/piece	mm	mm	mm	mm	mm	bolt holes	mm	Kg/piece
0.5	16	40	16	5	21	16.07	1	0.06	89	14	23	3	60.3	4	15.9	0.75
0.75	25	53	16	5	31	25.08	1	0.1	98	14	33	3	69.8	4	15.9	0.8
1	30	60	18	5	36	30.08	1	0.14	108	14	38	3	79.4	4	15.9	0.95
1.25	38	70	18	5	45	38.1	1	0.2	117	14	47	3	88.9	4	15.9	1.1
1.5	44.5	80	19	5	51	44.6	1	0.3	127	14	53	3	98.4	4	15.9	1.15
2	57	99	19	6	67	57.23	1	0.4	152	18	69	3	120.6	4	19	2.1
2.5	76.1	120	19	6	87	76.33	1	0.5	178	18	89	3	139.7	4	19	2.6
3	88.9	130	21	7	100	89.18	1	0.7	190	19	103	3	152.4	4	19	2.9
4	108	158	23	7	120	108.38	1	0.9	229	24	123	3	190.5	4	19	5.9

Flanges



Shanghai Shihang Copper Nickel Pipe Fittings Co., Ltd.