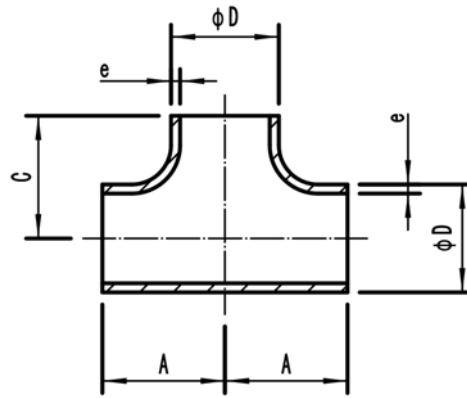


# Equal Tees

10Bar 14Bar 16Bar 20Bar

Material: CuNi 90/10  
CuNi 70/30



Outside diameter of pipe		DIN 86088								EEMUA 146							
		10Bar				14Bar				16Bar				20Bar			
nominal	actual	Wall	A	C	Theoretical	Wall	A	C	Theoretical	Wall	A	C	Theoretical	Wall	A	C	Theoretical
		thickness			weight	thickness			weight	thickness			weight	thickness			weight
inch	mm	e	mm	mm	Kg/piece	e	mm	mm	Kg/piece	e	mm	mm	Kg/piece	e	mm	mm	Kg/piece
0.5	20	1	25	25	0.05	1	25	25	0.05	-	-	-	-	-	-	-	-
0.75	25	1.5	29	29	0.07	1.5	29	29	0.07	-	-	-	-	-	-	-	-
1	30	1.5	38	38	0.1	1.5	38	38	0.1	2.5	38	38	0.18	2.5	38	38	0.18
1.25	38	1.5	48	48	0.13	1.5	48	48	0.13	2.5	48	48	0.29	2.5	48	48	0.29
1.5	44.5	1.5	57	57	0.19	1.5	57	57	0.19	2.5	57	57	0.43	2.5	57	57	0.43
2	57	1.5	64	64	0.29	1.5	64	64	0.29	2.5	64	64	0.57	2.5	64	64	0.57
2.5	76.1	2	76	76	0.65	2	76	76	0.65	2.5	76	76	0.88	2.5	76	76	0.88
3	88.9	2	86	86	0.82	2.5	86	86	1.03	2.5	86	86	1.16	2.5	86	86	1.16
4	108	2.5	105	105	1.6	2.5	105	105	1.6	3	105	105	2.09	3	105	105	2.09
5	133	2.5	124	124	2.8	3	124	124	3.36	-	-	-	-	-	-	-	-
6	159	2.5	143	143	4.4	3	143	143	5.28	3	143	143	4.07	3.5	143	143	4.74
7	193.7	2.5	157	157	4.7	3	157	157	6.6	-	-	-	-	-	-	-	-
8	219.1	3	178	178	12.8	3.5	178	178	14.95	4	178	178	17	4.5	178	178	19.1
10	267	3	216	216	16.6	4	216	216	22.1	4.5	216	216	24.9	5.5	216	216	30.4
12	323.9	4	254	254	31.5	5	254	254	39.4	5.5	254	254	43.3	7	254	254	55.1
14	368	4	279	279	39.4	5.5	279	279	54.2	6.5	279	279	64.05	8	279	279	78.8
16	419.1	4	305	305	55.1	6	305	305	82.65	7	305	305	96.4	9	305	305	124
18	457.2	4	343	343	67.65	6	343	343	101.5	8	343	343	135.3	9.5	343	343	160.65
20	508	4.5	381	381	92.8	6.5	381	381	134.1	8.5	381	381	175.3	11	381	381	226.9
24	610	5	432	432	126.6	8	432	432	202.6	10.5	432	432	265.9	13	432	432	329.2

Pipe Fittings



Shanghai Shihang Copper Nickel Pipe Fittings Co., Ltd.