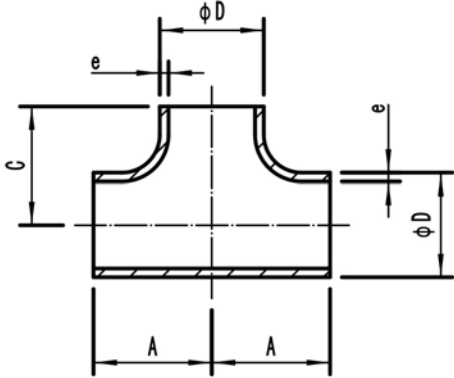


Equal Tees

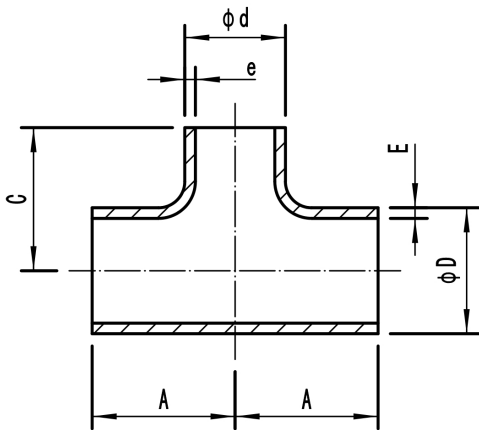
Material: CuNi 90/10
CuNi 70/30



Outside diameter of pipe		ANSI B16.9	
ØD		Centre to face	
nominal	actual	A	C
inch	mm	mm	mm
0.5	21.3	25	25
0.75	26.7	29	29
1	33.4	38	38
1.25	42.2	48	48
1.5	48.3	57	57
2	60.3	64	64
2.5	73	76	76
3	88.9	86	86
3.5	101.6	95	95
4	114.3	105	105
5	141.3	124	124
6	168.3	143	143
8	219.1	178	178
10	273	216	216
12	323.8	254	254
14	355.6	279	279
16	406.4	305	305
18	457	343	343
20	508	381	381

Reducing Tees

Material: CuNi 90/10
CuNi 70/30



Outside diameter of pipe						ANSI B16.9	
ØD x Ød		ØD x Ød		Centre to face		A	C
nominal	actual	nominal	actual	A	C		
inch	mm	inch	mm	mm	mm		
0.5	x	0.375	21.3	x	17.3	25	25
0.5	x	0.25	21.3	x	13.7	25	25
0.75	x	0.5	26.7	x	21.3	29	29
0.75	x	0.375	26.7	x	17.3	29	29
1	x	0.75	33.4	x	26.7	38	38
1	x	0.5	33.4	x	21.3	38	38
1.25	x	1	42.2	x	33.4	48	48
1.25	x	0.75	42.2	x	26.7	48	48
1.25	x	0.5	42.2	x	21.3	48	48
1.5	x	1.25	48.3	x	42.2	57	57
1.5	x	1	48.3	x	33.4	57	57
1.5	x	0.75	48.3	x	26.7	57	57
1.5	x	0.5	48.3	x	21.3	57	57
2	x	1.5	60.3	x	48.3	64	60
2	x	1.25	60.3	x	42.2	64	57
2	x	1	60.3	x	33.4	64	51
2	x	0.75	60.3	x	26.7	64	44



Shanghai Shihang Copper Nickel Pipe Fittings Co., Ltd.

TEL:86-21-58050989 FAX:86-21-68291168 E-mail:sales@shshihang.com Website:www.shshihang.com