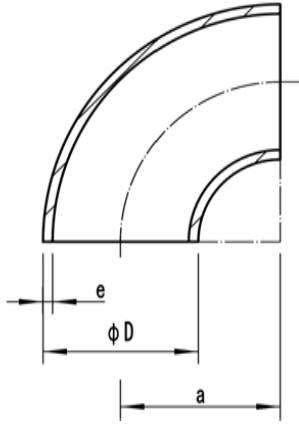


Elbows Short Radius

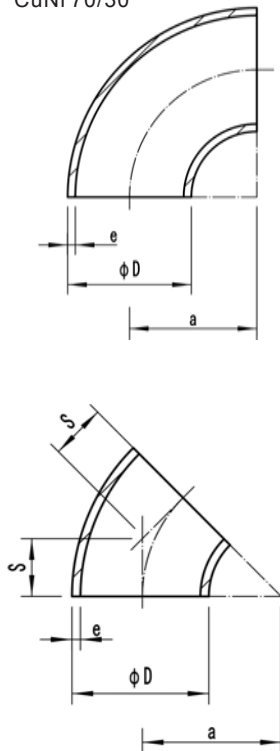
Material: CuNi 90/10
CuNi 70/30



Outside diameter of pipe		ANSI B16.9
ØD		Radius
nominal inch	actual mm	a mm
1	33.4	25
1.25	42.2	32
1.5	48.3	38
2	60.3	51
2.5	73	64
3	88.9	76
3.5	101.6	89
4	114.3	102
5	141.3	127
6	168.3	152
8	219.1	203
10	273	254
12	323.8	305
14	355.6	356
16	406.4	406
18	457	457
20	508	508

Elbows Long Radius

Material: CuNi 90/10
CuNi 70/30



Outside diameter of pipe		ANSI B16.9	
ØD		a	s
nominal inch	actual mm	mm	mm
0.5	21.3	38	16
0.75	26.7	38	19
1	33.4	38	22
1.25	42.2	48	25
1.5	48.3	57	29
2	60.3	76	35
2.5	73	95	44
3	88.9	114	51
3.5	101.6	133	57
4	114.3	152	64
5	141.3	190	79
6	168.3	229	95
8	219.1	305	127
10	273	381	159
12	323.8	457	190
14	355.6	533	222
16	406.4	610	254
18	457	686	286
20	508	762	318

Pipe Fittings

