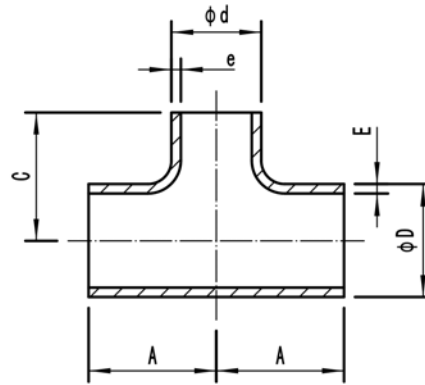


Reducing Tees

16Bar 20Bar

Material: CuNi 90/10
CuNi 70/30



Outside diameter of pipe						EEMUA 146									
						16Bar					20Bar				
ØD x ød		ØD x ød				Wall thickness		Centre to face		Theoretical weight	Wall thickness		Centre to face		Theoretical weight
nominal		actual				E	e	A	C	Kg/piece	E	e	A	C	Kg/piece
inch		mm				mm	mm	mm	mm		mm	mm	mm	mm	
1	x	0.75	30	x	25	2.5	2	38	38	0.17	2.5	2	38	38	0.17
1.25	x	0.75	38	x	25	2.5	2	48	48	0.28	2.5	2	48	48	0.28
1.25	x	1	38	x	30	2.5	2.5	48	48	0.28	2.5	2.5	48	48	0.28
1.5	x	0.75	44.5	x	25	2.5	2	57	57	0.37	2.5	2	57	57	0.37
1.5	x	1	44.5	x	30	2.5	2.5	57	57	0.4	2.5	2.5	57	57	0.4
1.5	x	1.25	44.5	x	38	2.5	2.5	57	57	0.41	2.5	2.5	57	57	0.41
2	x	1	57	x	30	2.5	2.5	64	51	0.51	2.5	2.5	64	51	0.51
2	x	1.25	57	x	38	2.5	2.5	64	57	0.54	2.5	2.5	64	57	0.54
2	x	1.5	57	x	44.5	2.5	2.5	64	60	0.55	2.5	2.5	64	60	0.55
2.5	x	1.25	76.1	x	38	2.5	2.5	76	64	0.83	2.5	2.5	76	64	0.83
2.5	x	1.5	76.1	x	44.5	2.5	2.5	76	67	0.84	2.5	2.5	76	67	0.84
2.5	x	2	76.1	x	57	2.5	2.5	76	70	0.85	2.5	2.5	76	70	0.85
3	x	1.5	88.9	x	44.5	2.5	2.5	86	73	1.1	2.5	2.5	86	73	1.1
3	x	2	88.9	x	57	2.5	2.5	86	76	1.12	2.5	2.5	86	76	1.12
3	x	2.5	88.9	x	76.1	2.5	2.5	86	83	1.15	2.5	2.5	86	83	1.15
4	x	2	108	x	57	3	2.5	105	89	1.9	3	2.5	105	89	1.9
4	x	2.5	108	x	76.1	3	2.5	105	95	1.92	3	2.5	105	95	1.92
4	x	3	108	x	88.9	3	2.5	105	98	1.95	3	2.5	105	98	1.95
6	x	2.5	159	x	76.1	3	2.5	143	121	3.95	3.5	2.5	143	121	4.6
6	x	3	159	x	88.9	3	2.5	143	124	4	3.5	2.5	143	124	4.65
6	x	4	159	x	108	3	3	143	130	4.05	3.5	3	143	130	4.72
8	x	3	219.1	x	88.9	4	2.5	178	152	16.6	4.5	2.5	178	152	18.7
8	x	4	219.1	x	108	4	3	178	156	16.9	4.5	3	178	156	19
8	x	6	219.1	x	159	4	3	178	168	17	4.5	3.5	178	168	19.1

Pipe Fittings



Shanghai Shihang Copper Nickel Pipe Fittings Co., Ltd.

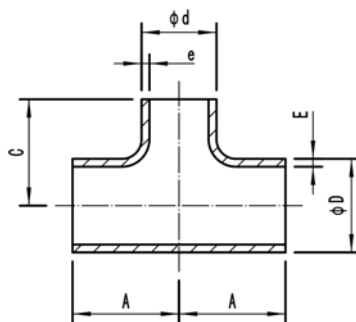
TEL:86-21-58050989 FAX:86-21-68291168 E-mail:sales@shshihang.com Website:www.shshihang.com

Reducing Tees

16Bar

20Bar

Material: CuNi 90/10
CuNi 70/30



Outside diameter of pipe						EEMUA 146									
						16Bar					20Bar				
ØD x Ød		ØD x Ød				Wall thickness		Centre to face		Theoretical weight Kg/piece	Wall thickness		Centre to face		Theoretical weight Kg/piece
nominal	inch	actual				E	e	A	C		E	e	A	C	
		mm				mm	mm	mm	mm	mm	mm	mm	mm	mm	
10	x	4	267	x	108	4.5	3	216	184	21.6	5.5	3	216	184	26.4
10	x	6	267	x	159	4.5	3	216	194	21.75	5.5	3.5	216	194	26.6
10	x	8	267	x	219.1	4.5	4	216	203	21.9	5.5	4.5	216	203	26.75
12	x	6	323.9	x	159	5.5	3	254	219	38.5	7	3.5	254	219	49
12	x	8	323.9	x	219.1	5.5	4	254	229	39.6	7	4.5	254	229	50.4
12	x	10	323.9	x	267	5.5	4.5	254	241	40.7	7	5.5	254	241	51.8
14	x	8	368	x	219.1	6.5	4	279	248	58.8	8	4.5	279	248	72.35
14	x	10	368	x	267	6.5	4.5	279	257	59.7	8	5.5	279	257	73.5
14	x	12	368	x	323.9	6.5	5.5	279	270	61.5	8	7	279	270	75.7
16	x	10	419.1	x	267	7	4.5	305	283	89.6	9	5.5	305	283	115.2
16	x	12	419.1	x	323.9	7	5.5	305	295	91.4	9	7	305	295	117.5
16	x	14	419.1	x	368	7	6.5	305	305	93.5	9	8	305	305	120.2
18	x	12	457.2	x	323.9	8	5.5	343	321	126.3	9.5	7	343	321	150
18	x	14	457.2	x	368	8	6.5	343	330	128.3	9.5	8	343	330	152.35
18	x	16	457.2	x	419.1	8	7	343	330	129.9	9.5	9	343	330	154.25
20	x	14	508	x	368	8.5	6.5	381	356	162	11	8	381	356	209.65
20	x	16	508	x	419.1	8.5	7	381	356	164.2	11	9	381	356	212.5
20	x	18	508	x	457.2	8.5	8	381	368	168.3	11	9.5	381	368	217.8
24	x	16	610	x	419.1	10.5	7	432	406	248.3	13	9	432	406	307.4
24	x	18	610	x	457.2	10.5	8	432	419	251.7	13	9.5	432	419	311.6
24	x	20	610	x	508	10.5	8.5	432	432	255.3	13	11	432	432	316.1
28	x	18	711	x	457.2	12	8	521	470	394.6	15	9.5	521	470	493.25
28	x	20	711	x	508	12	8.5	521	483	398.2	15	11	521	483	497.75
28	x	24	711	x	610	12	10.5	521	508	409.9	15	13	521	508	512.4
32	x	20	813	x	508	13.5	8.5	597	533	495	17	11	597	533	623.3
32	x	24	813	x	610	13.5	10.5	597	559	506.8	17	13	597	559	638.2
32	x	28	813	x	711	13.5	12	597	572	518.8	17	15	597	572	653.3
36	x	24	914	x	610	15.5	10.5	673	610	723.6	19	13	673	610	887
36	x	28	914	x	711	15.5	12	673	622	735.4	19	15	673	622	901.45
36	x	32	914	x	813	15.5	13.5	673	648	754.4	19	17	673	648	924.75

Pipe Fittings



Shanghai Shihang Copper Nickel Pipe Fittings Co., Ltd.